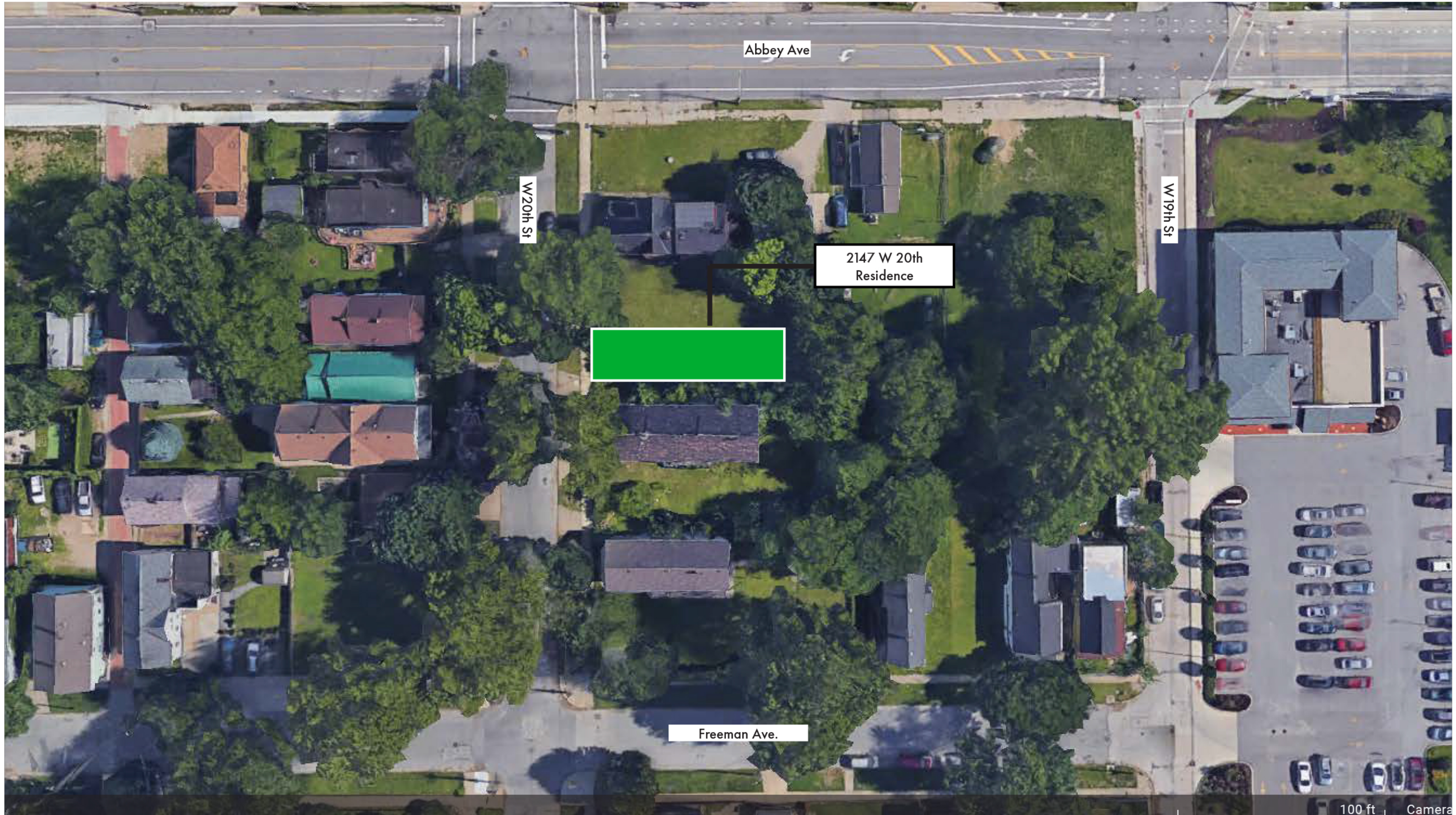


2147 W20th Street Residence

Cleveland

Design Review - July 13, 2022

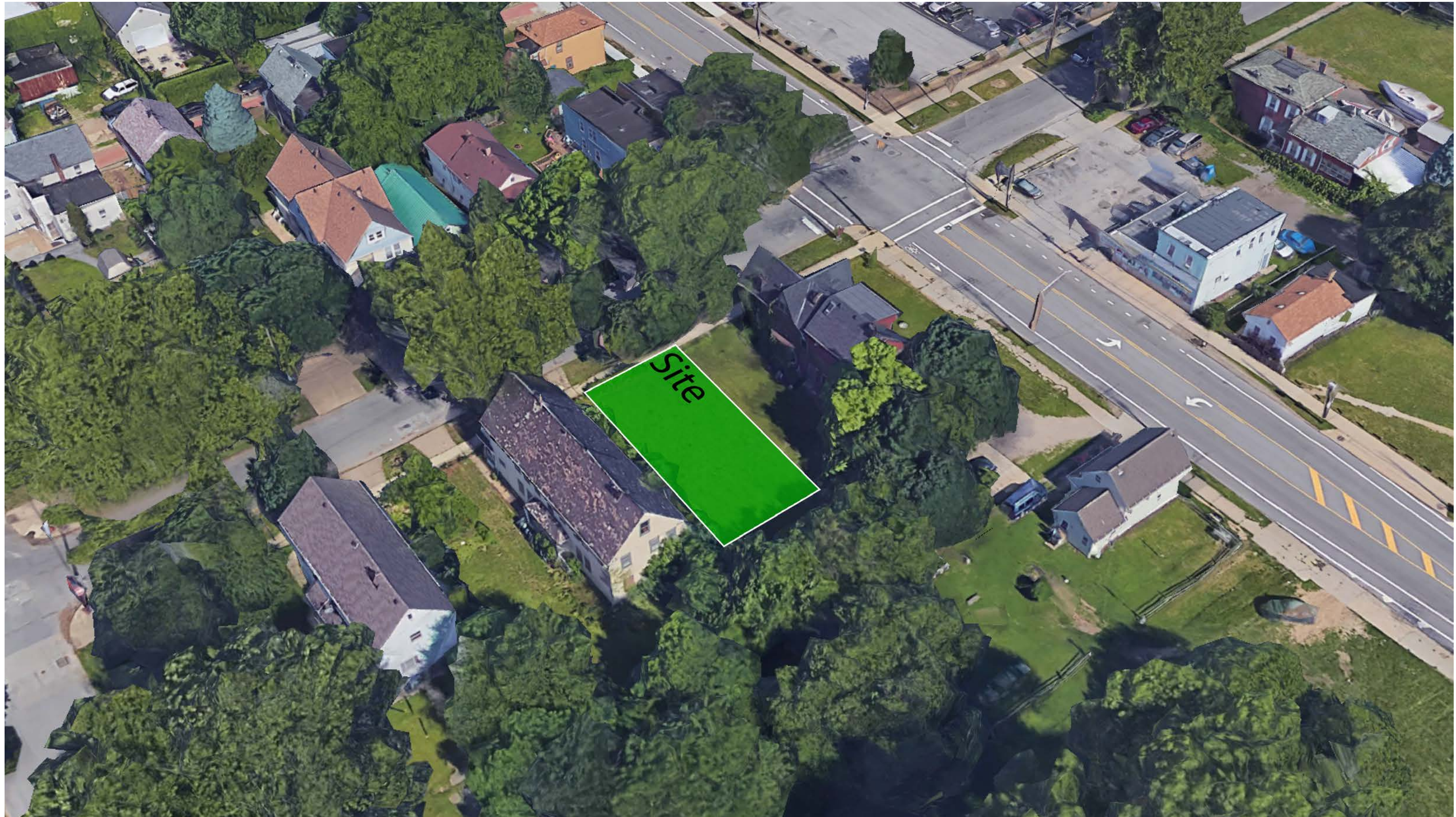




100 ft | Camera



Site Vicinity Map
Scale: NTS



Site Aerial
Scale: NTS



Existing housing



Existing housing



Existing housing



Existing housing



Existing housing



Existing housing

Surrounding Context



Site from front



View from Freeman Ave.



Alley view from Abbey Ave



Site from rear



View from Abbey Ave.



Alley view from Site

Existing Site

WEST 20TH STREET

tree lawn

sidewalk

33.00'

33.00'

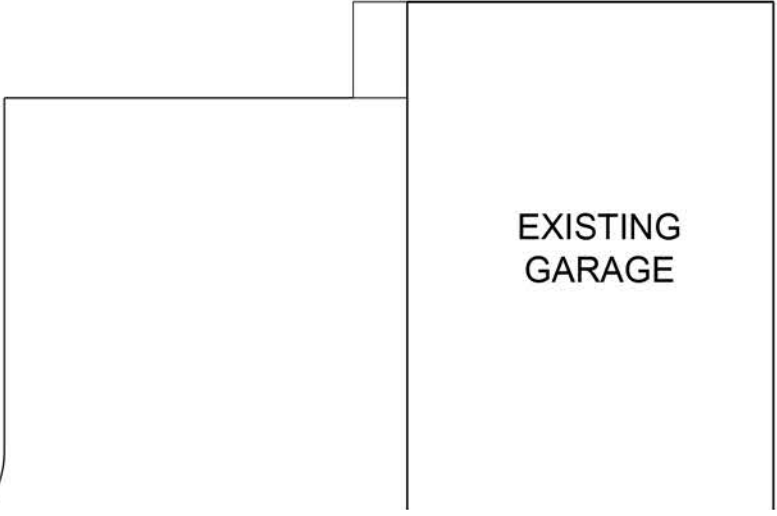
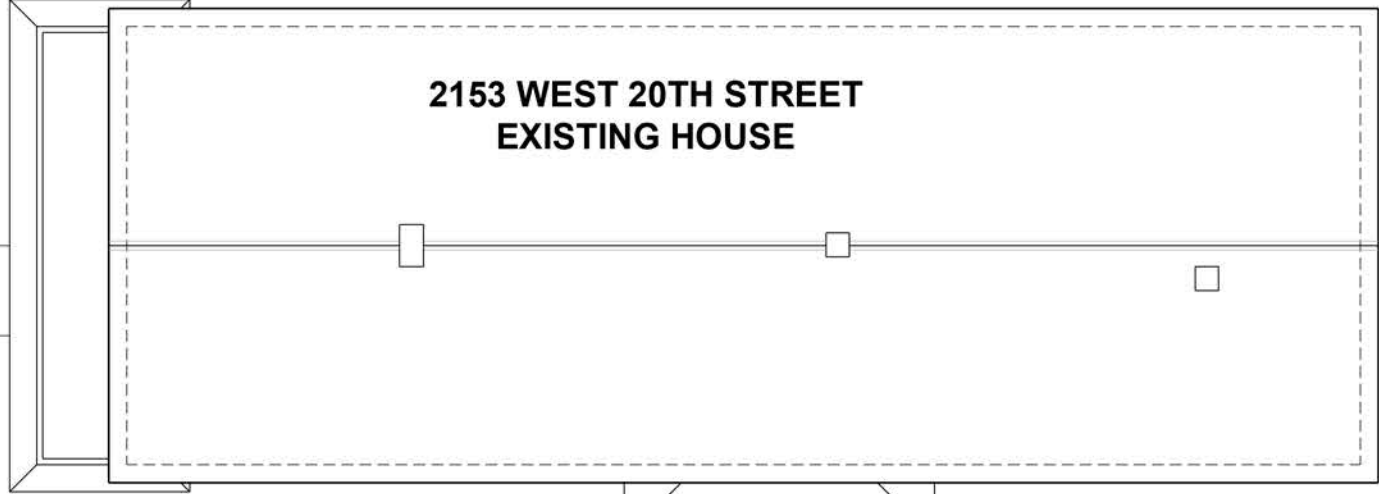
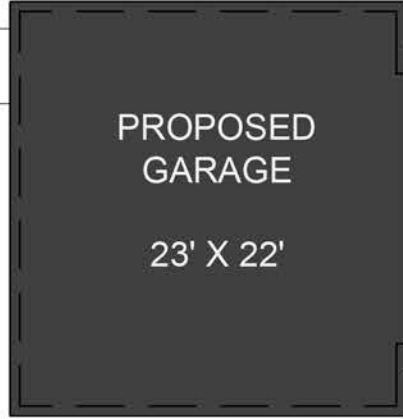
38.00'

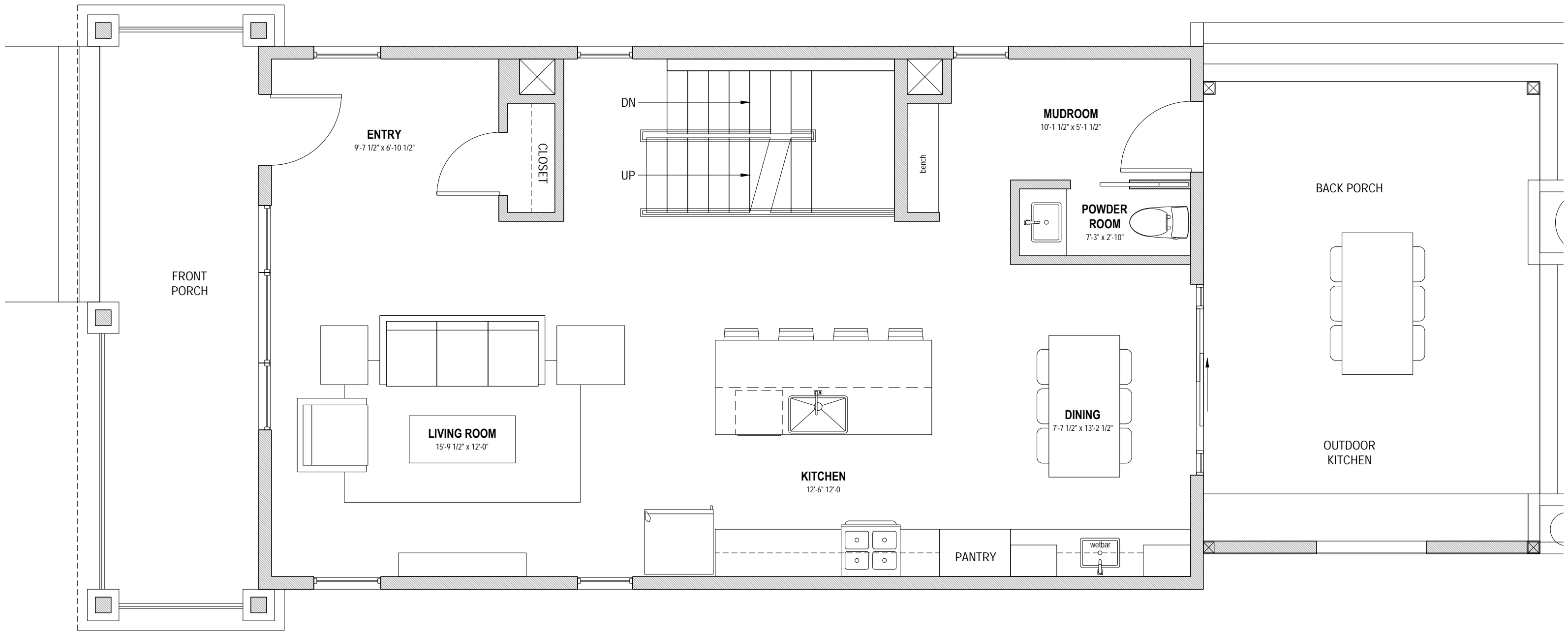
2139 WEST 20TH STREET
VACANT LOT

115.50'

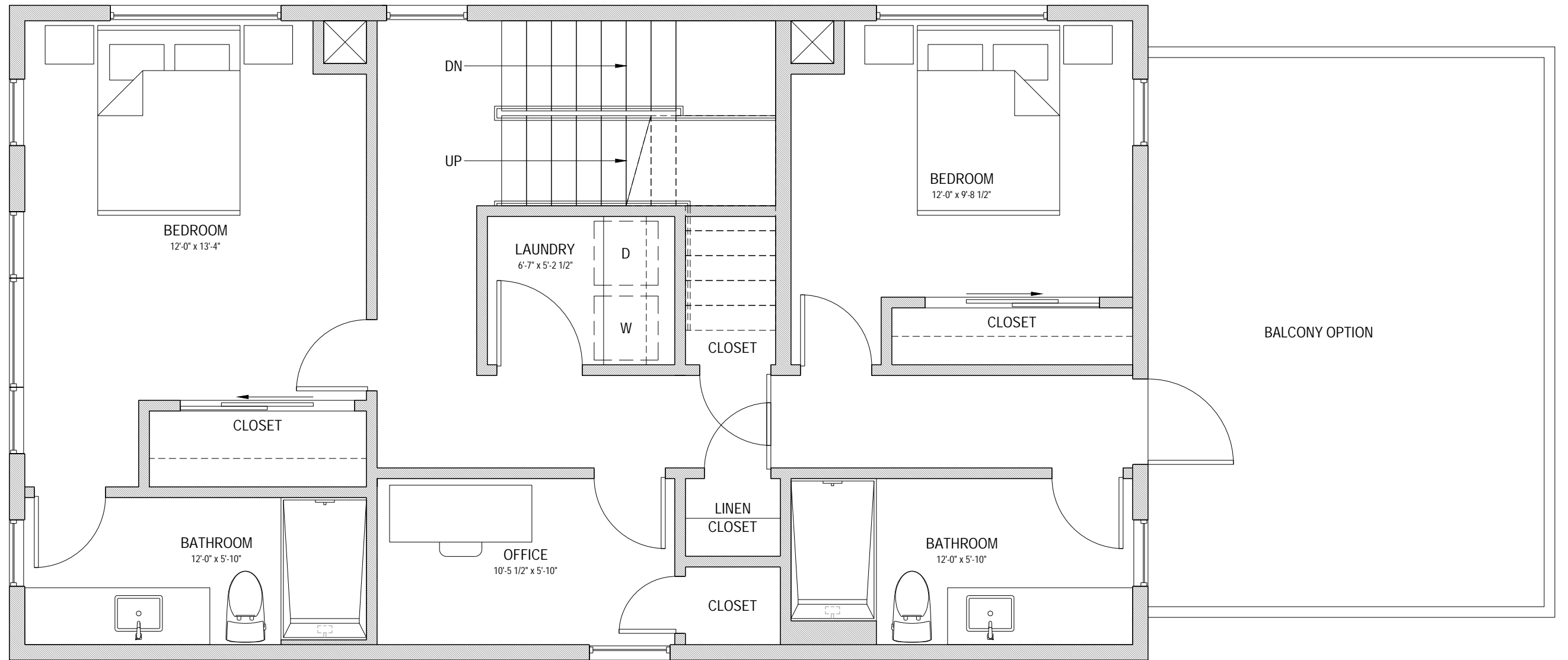
115.50'

10.51'

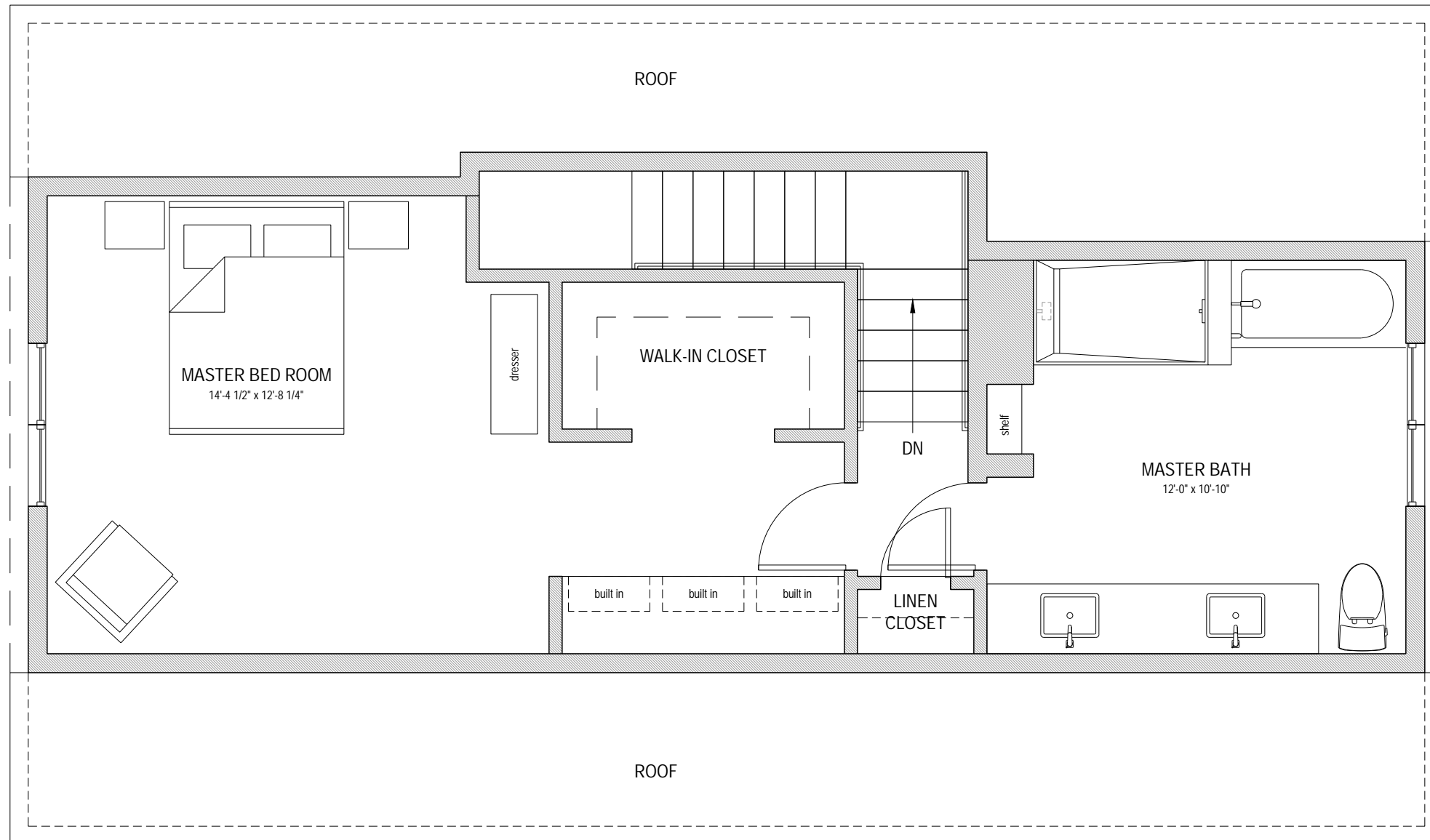


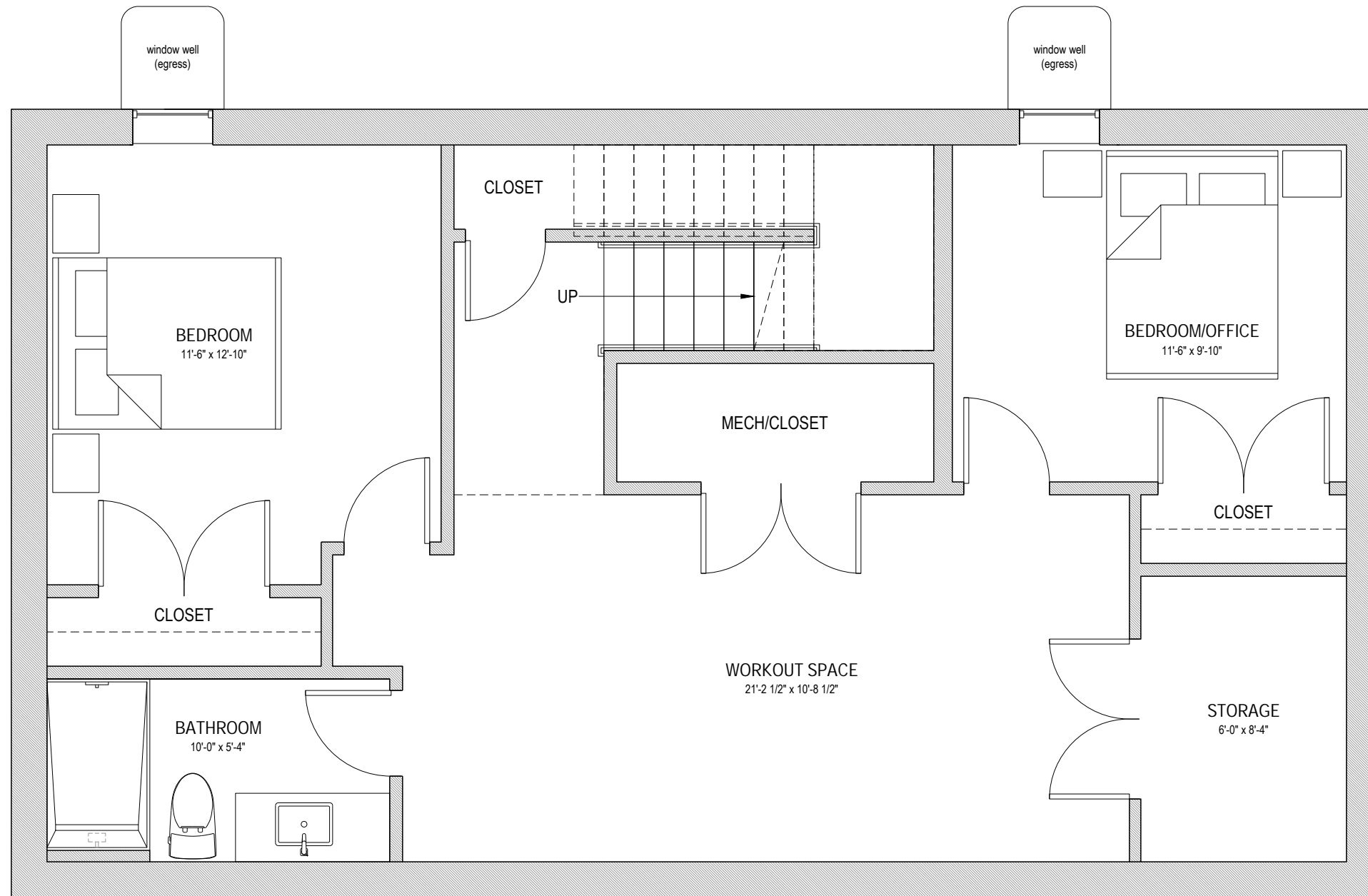


1st Floor Plan
Scale: 1/8" = 1'-0"



2nd Floor Plan
Scale: 1/8" = 1'-0"



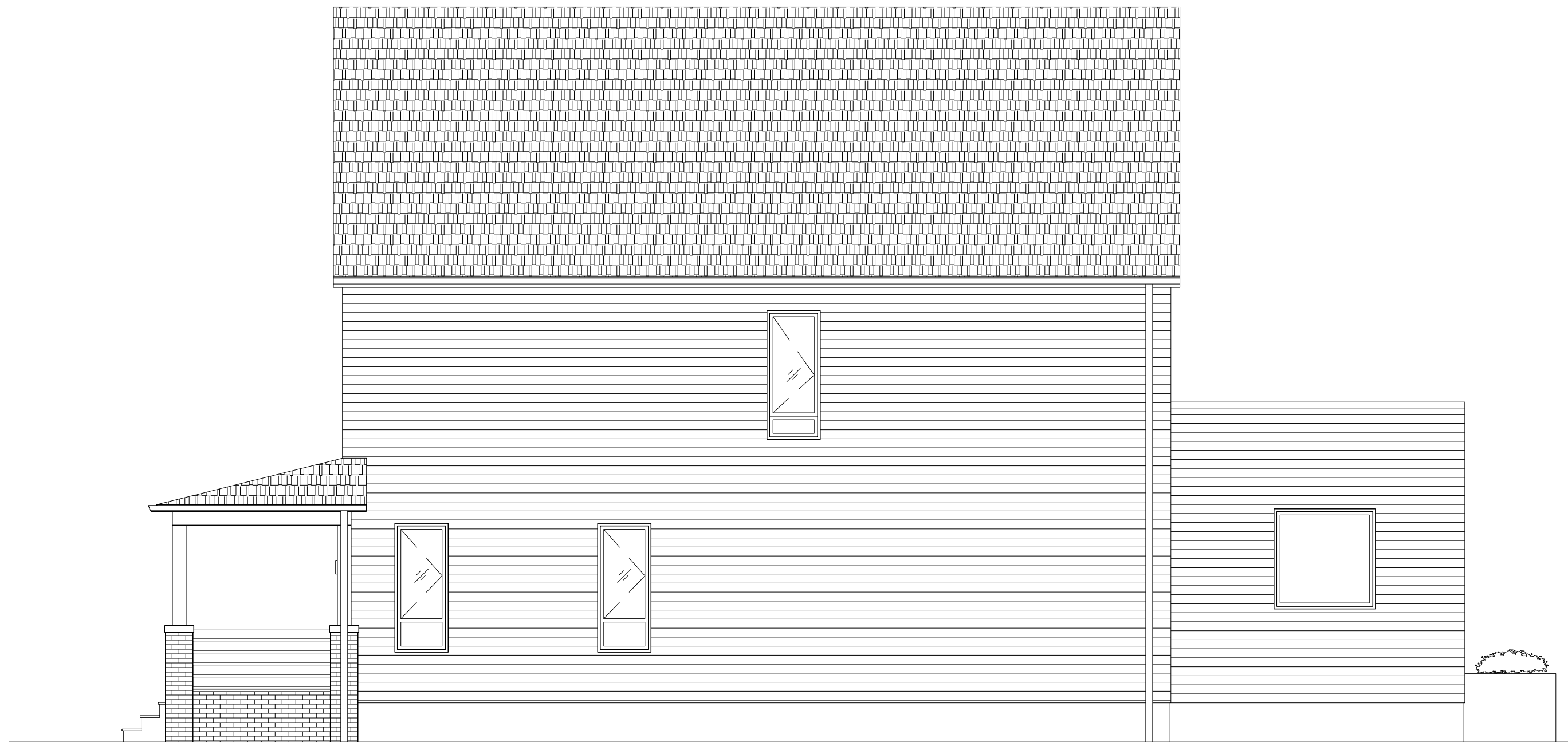




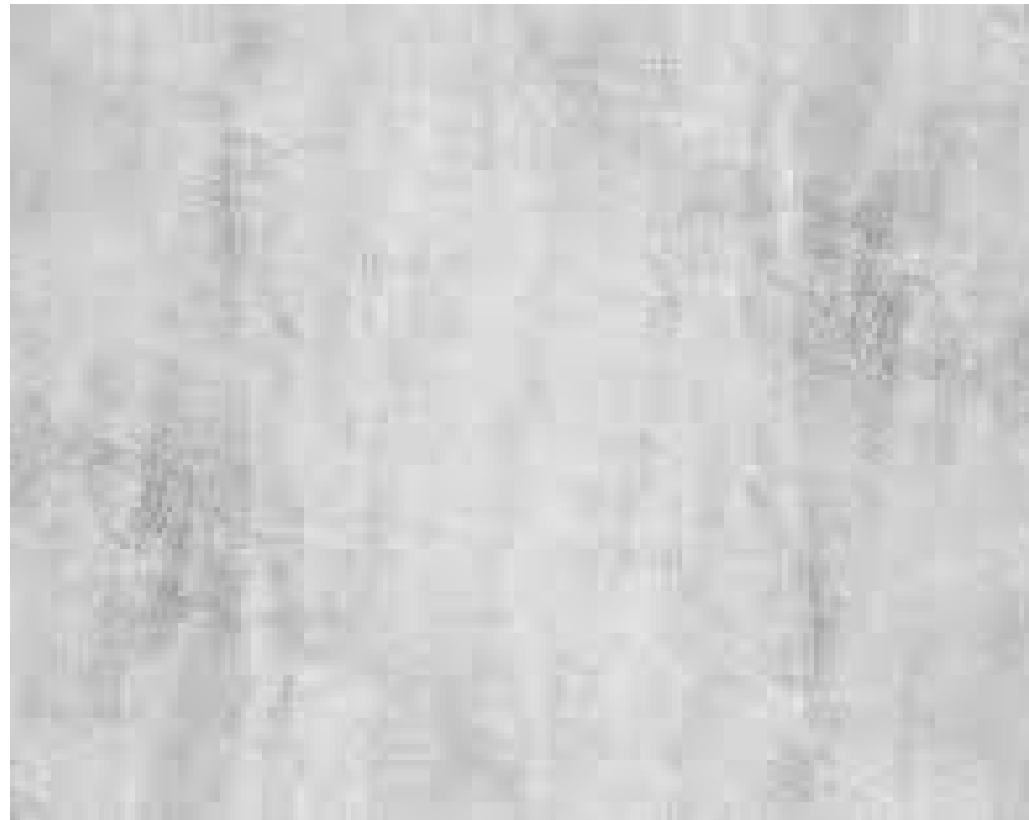
East/West Elevation
Scale: 3/16" = 1'-0"



North Elevation
Scale: 3/16" = 1'-0"



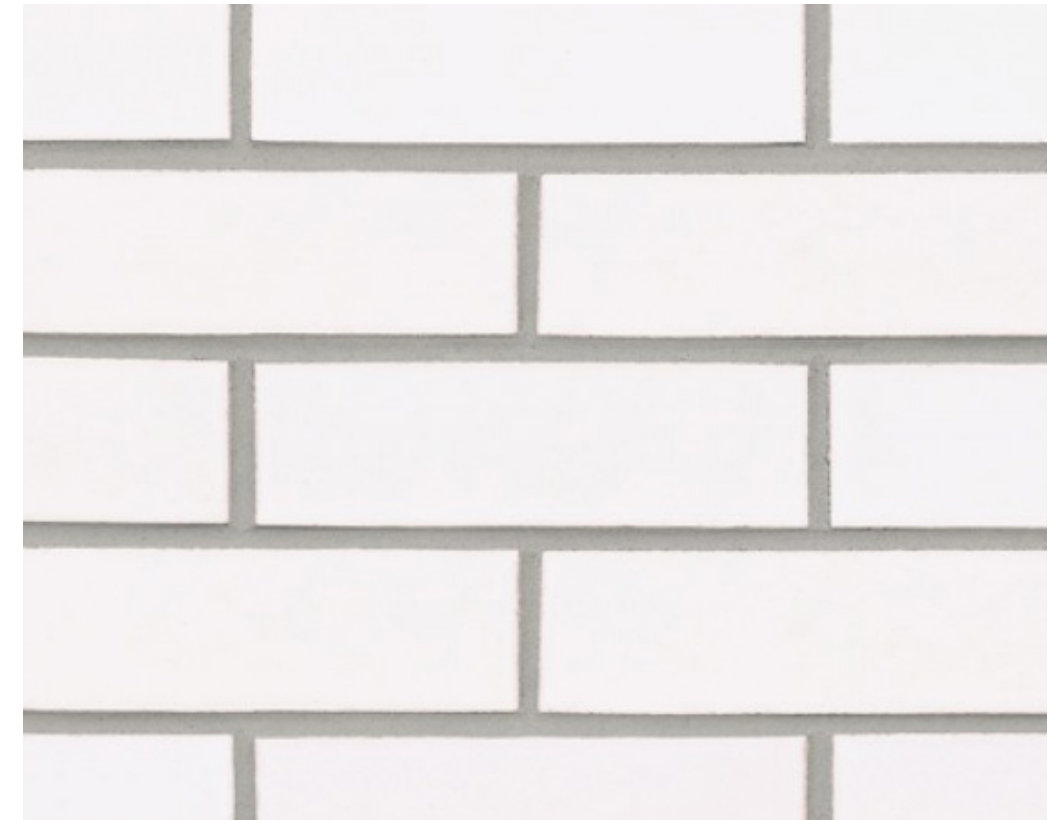
South Elevation
Scale: 3/16" = 1'-0"



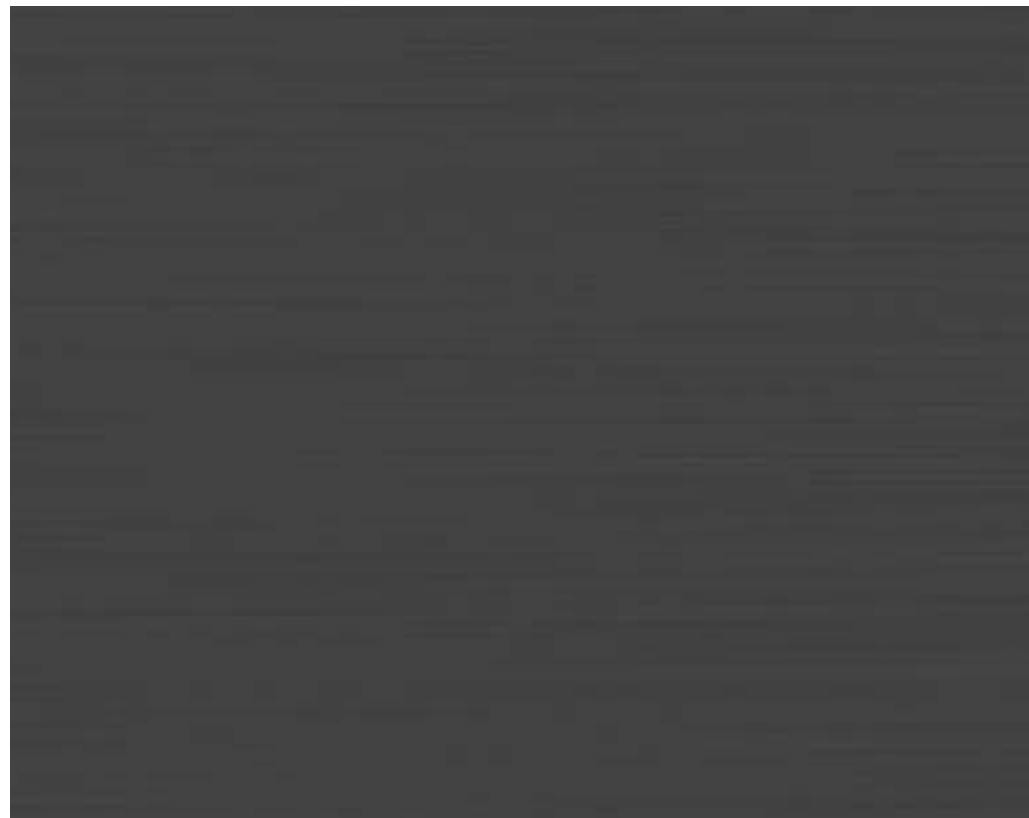
Poured-in-Place Concrete



White Fiber Cement Board (lapped)



White Smooth Face Brick



Pre-finished Aluminum



Dark Window Frames



Wall Mounted Sconces

Material Palette



Project Render
View from street



Project Render
View down sidewalk



Project Render
View from rear